

Turn your PC into a Professional Training Simulator for Tower Crane Operators

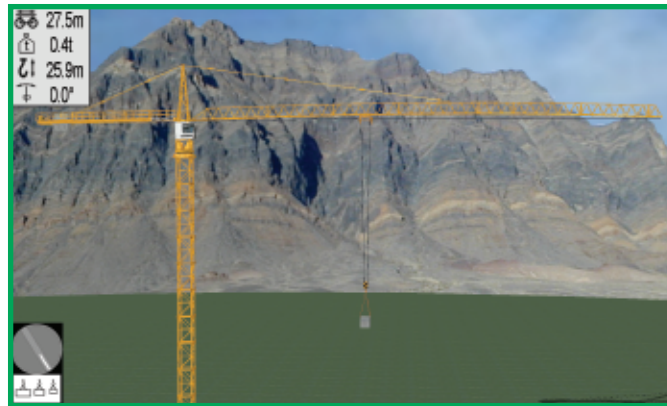
Just connect and calibrate the USB-ready simulator controls, and install and license the simulation software

Step 1: Use Your Own PC

Step 2: Choose one of our USB-ready Simulator Controls



Step 3: Add our Tower Crane Simulation Software



Simlog's **Tower Crane Personal Simulator** puts trainees at the controls of a modern freestanding top-slewing tower crane with trolley jib.

A total of **six Simulation Modules** of increasing difficulty are provided, based on our **Instructional Design**, beginning with the basics of moving hookblocks, then loads, while controlling sway. Later Simulation Modules add obstacles and load charts, to end with "zigzag" trajectory following exercises. For each Simulation Module, key **"Performance Indicators"** measure both the productivity and quality of the simulated work.

The commercial software license is just **USD\$ 4,000**, and this is a one-time-fee. New operators will be able to reach their productivity goals faster while keeping accidents due to inexperience at a minimum.

We offer **free software evaluation** with no time-out period.

Additional Personal Simulators are also available:

To learn more, contact Simlog today

SIMLOG

www.simlog.com
info@simlog.com

